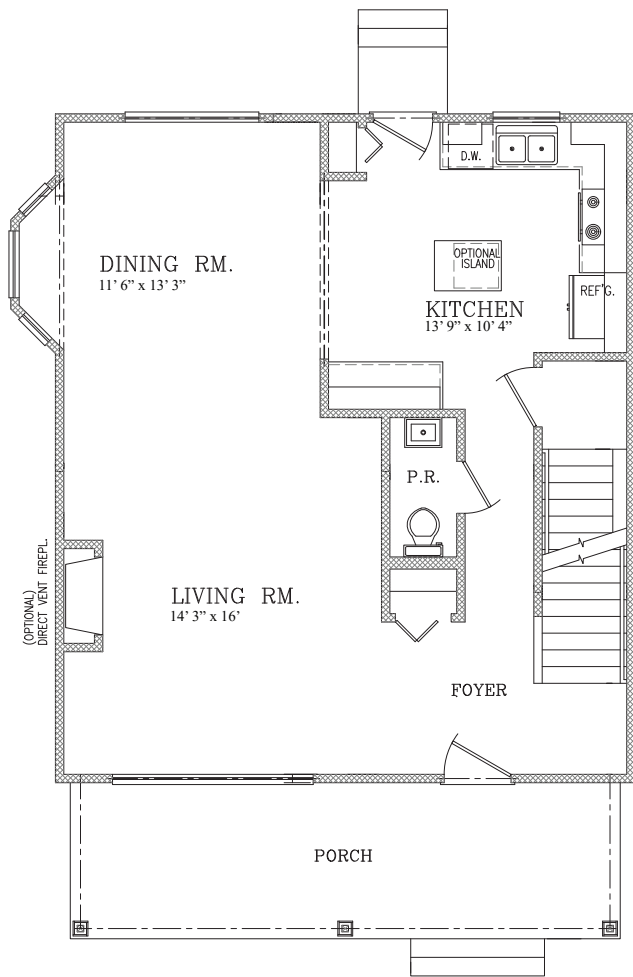
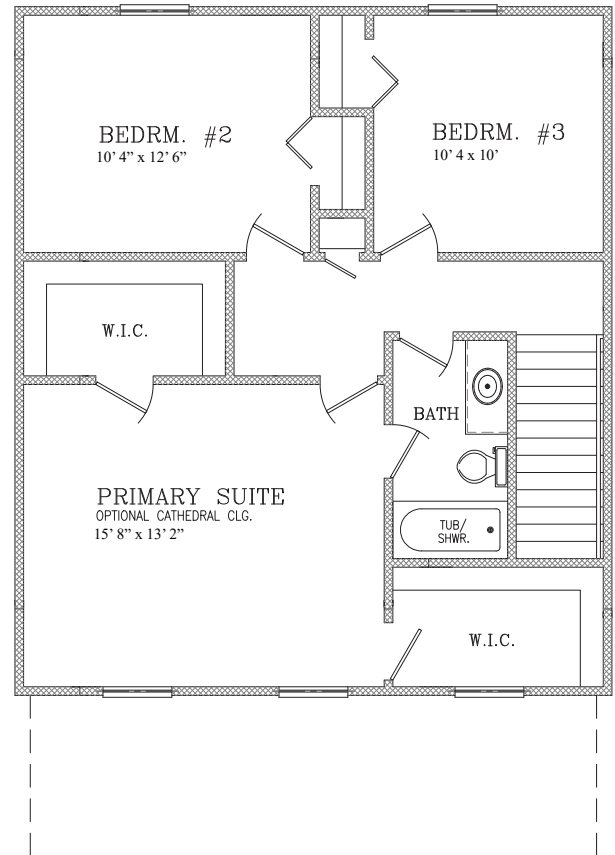
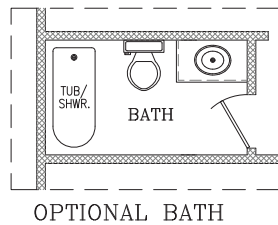


THE HARBOR

The Harbor floor plan offers 1,572 square feet of inviting living space, designed for both comfort and functionality. This layout features 3 bedrooms, along with 2 full baths and a convenient powder room. The detached 2-car garage complements the home's design. Inside, the open floor plan seamlessly connects the spacious kitchen, dining room, and living room, perfect for entertaining. The large kitchen includes a central island and snack bar, ideal for casual meals, making it an ideal sanctuary for modern living.



FIRST FLOOR PLAN



SECOND FLOOR PLAN