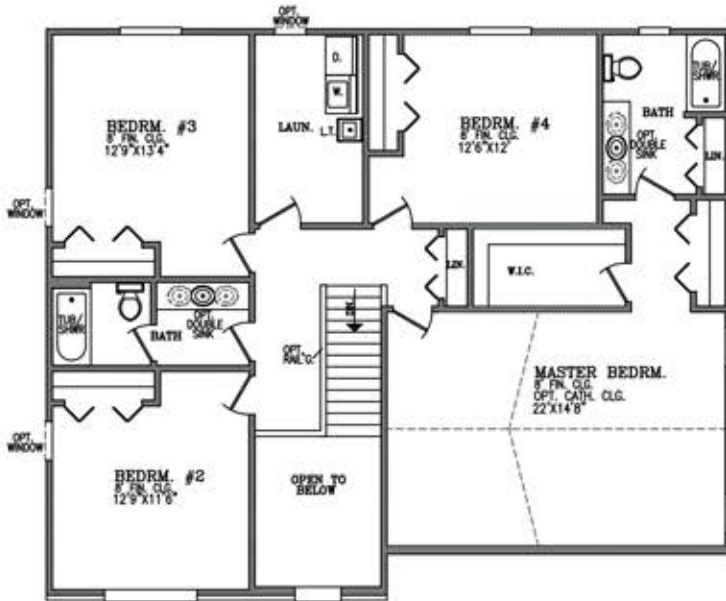
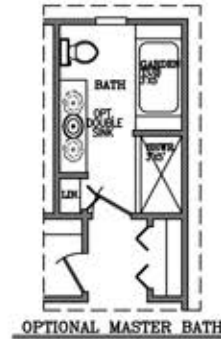


# THE ST. ANDREW

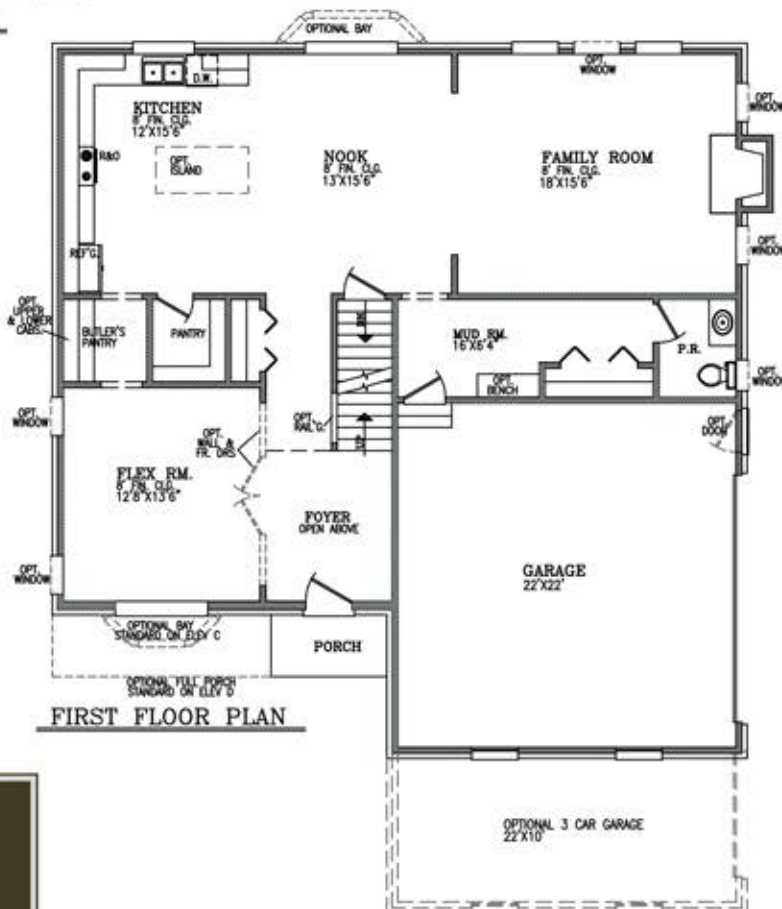
The 2,805 square foot St. Andrew is a spacious architecturally crafted designed colonial style home that includes 4 bedrooms and 2-1/2 baths, full basement and 2 car attached garage. The open first floor plan is accented by a grand two story foyer, oversized mud room and spacious kitchen & nook as well as a butlers pantry that provides well for family gatherings and entertaining. The second floor provides for the convenience of the second floor laundry room with an oversized master suite with an optional bath layout.



SECOND FLOOR PLAN



OPTIONAL MASTER BATH



FIRST FLOOR PLAN

Presented By:

**INFINITY**  
Homes, & Co.

InfinityHomesCorp.com