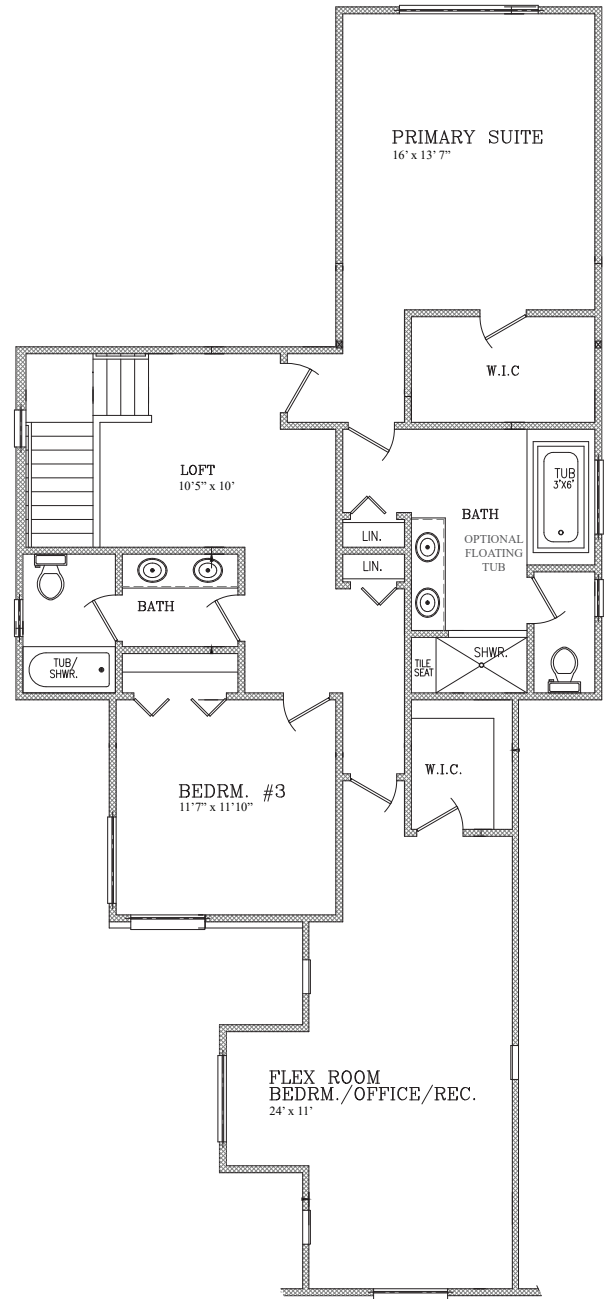
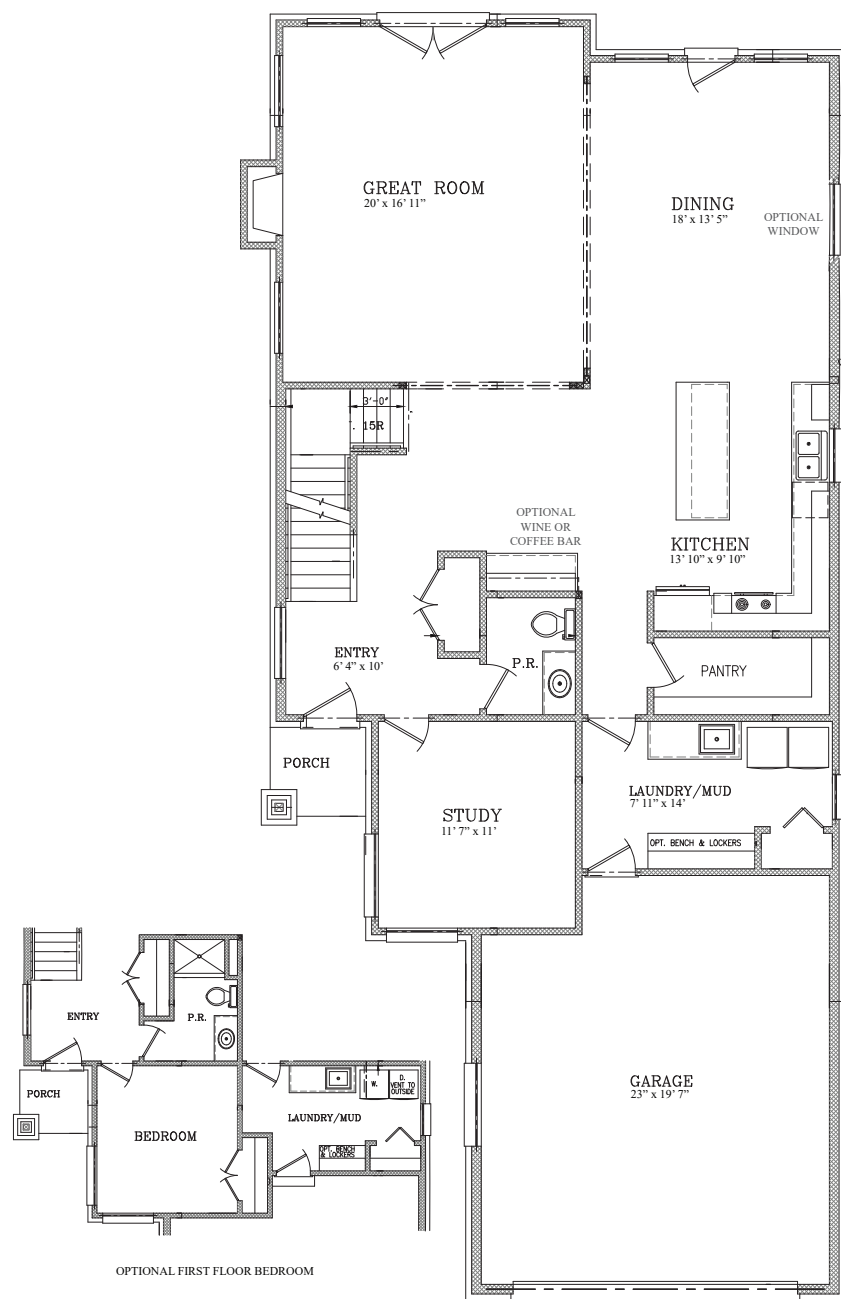


THE WOODLAND

The Woodland offers 2,800 square feet of spacious, flexible living designed for modern families. With 3 bedrooms, 2.5 baths, along with an optional layout for a first floor master making the home 4 Bedrooms and 3 Full Baths, along with a generous loft that can function as a second living area, home office, or playroom, this home adapts to your unique lifestyle. Personalize your space with an optional butler's pantry that is perfectly situated for wine or coffee bar. The large laundry/mudroom combo provides daily functionality with the option to add a bench and lockers for extra convenience. The positional points of the home along with well-appointed full glass windows and door walls offer sunset views of Woodland Lake.



INFINITY HOMES & CO

InfinityHomesCorp.com

Prices, plans and specifications are subject to change without notice or obligation. Floor plan is an artist's conception, may vary in construction. Square footage varies per community. Floor plan dimensions are approximate. ©2025