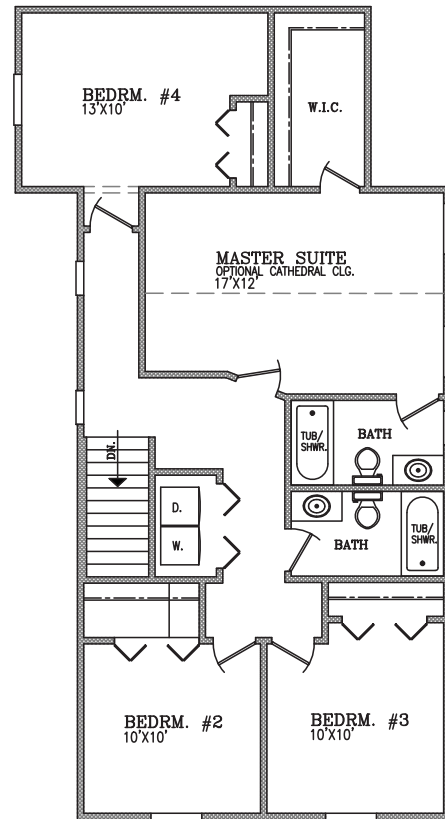
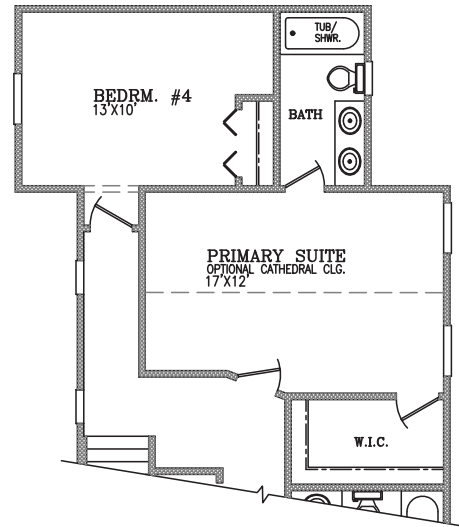
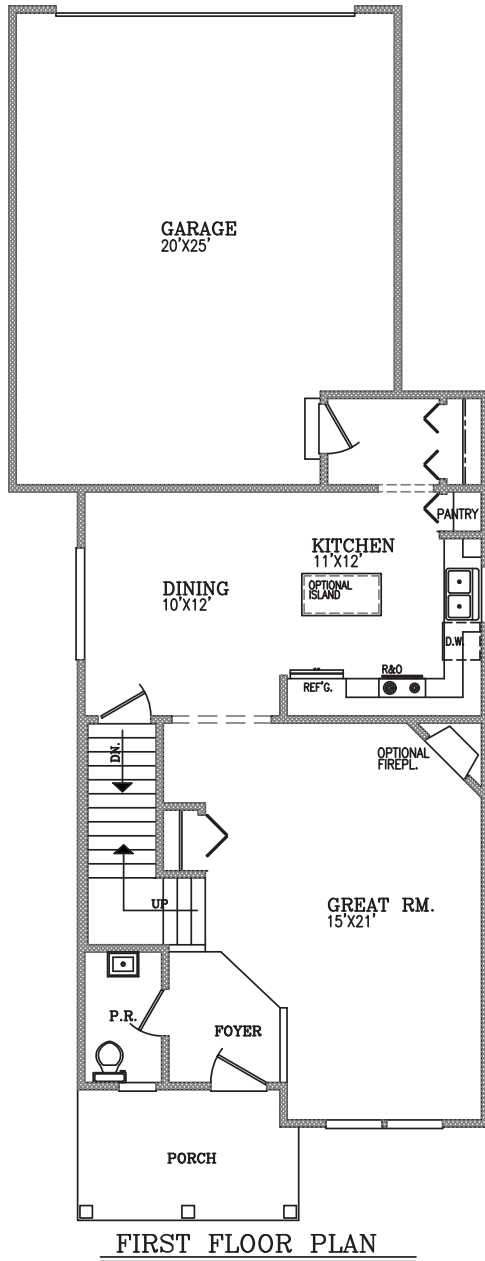


THE CASCADE

The Cascade floor plan spans 1792 square feet, designed to accommodate modern living with four bedrooms and 2.5 baths. It includes a two-car attached garage for convenience. The highlight is a spacious open great room, optionally featuring a fireplace for added comfort. The owner's suite offers flexibility with an optional layout, including the possibility of a larger owner's bathroom for enhanced luxury.



SECOND FLOOR PLAN