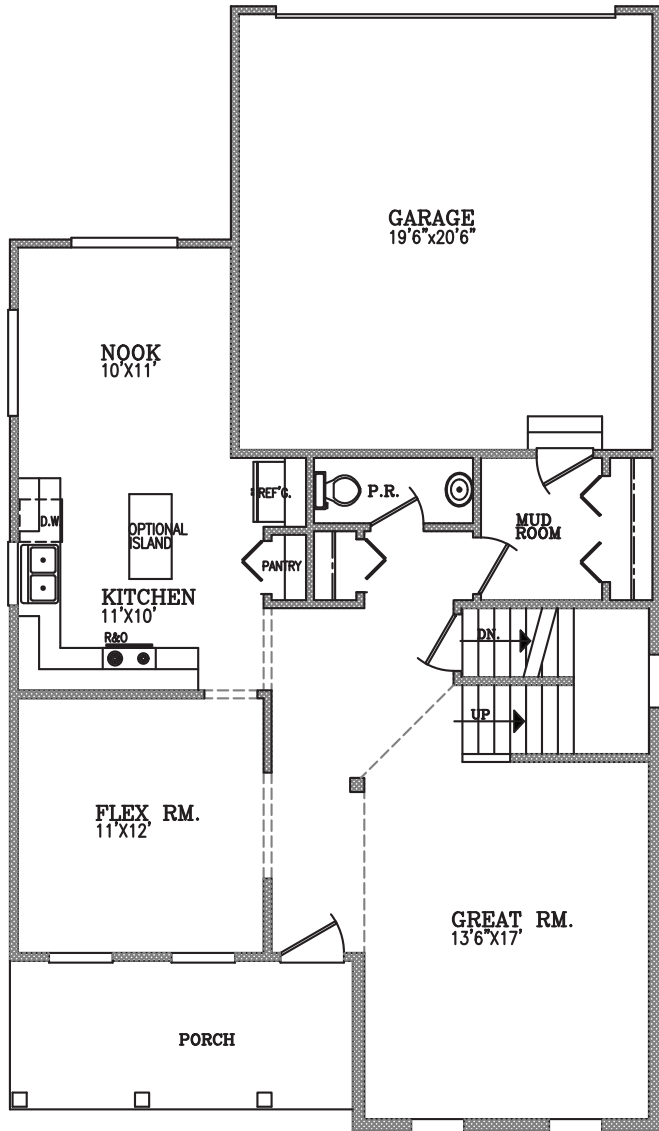
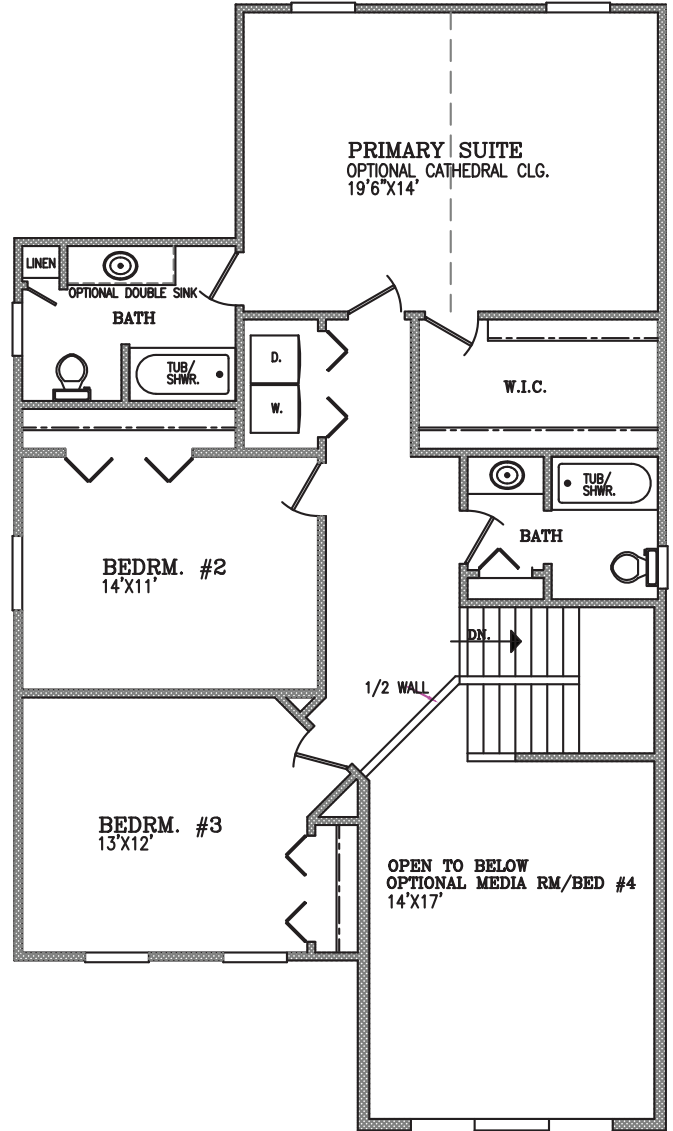


# THE BAYSIDE

The Bayside floor plan offers 2020 square feet of living space, presenting a versatile layout that adapts to various needs. Featuring 3 bedrooms with the option to convert the media room into a fourth bedroom, it includes 2 1/2 baths and a convenient 2-car attached garage. The large owner suite ensures comfort, while a flex room on the first floor can serve as either an in-home office or a dining room, adding to its adaptability.



FIRST FLOOR PLAN



SECOND FLOOR PLAN